



Ryton-on-Dunsmore Provost Williams

Church of England Academy

@RytonPWAcademy



Newsletter Monday 19th May 2025

"Let your light shine"



Firstly, well done to all of Year 6 for their efforts and attitude to how they faced the challenges and changes of last week. We are all very proud of you.

Around school, the learning has been calm and respectful. As this term is very short, all staff have adapted the curriculum to ensure that all pupils are still able to have a curriculum that has both breadth and depth. Some of the units may be continued into next term, but you should have received a full over view of the learning which will take place in your child's class which can be found the website and via the class Dojo.

Ryton Etiquette

At Ryton, we have developed an etiquette which all pupils know and live out in school. One area which will be a focus for next term, and would be something parents can support us with, is pupils correct use of cutlery, and walking around while still eating. If you could speak to your child and support them over half term, that would be amazing.



YOU ARE INVITED TO THE

Crowning of the May King and Queen

Friday 6th June 2025



Following a tradition of over 100 years in Ryton, we are busy preparing to Crown our new May King and Queen on the afternoon of 6th June. All parents, carers and families are welcome to join us, the gate will be open at 1.15pm.



SPORTS DAY

PICNIC

PTA FETE

8.40am School starts as normal (ensure your child knows if they are having a school lunch or you will meet them for a picnic).

10am Parents/carers can enter the site via the side gate to watch children compete.

Midday Children go back to classrooms, parents collect children from classroom doors for picnic. Children whose parents are not attending the picnic will eat with staff.

1.05pm The bell will ring for children to return to classes for afternoon register.

2.00pm Parents can collect children from classrooms and then enjoy the fete.

3.15pm Children who have not been collected by parents will leave school as normal, transport will operate at normal times and so will the Ark.

4.30pm Fete ends



**THURSDAY
10TH JULY**

RYTON ON DUNSMORE ACADEMY

RYTON ON DUNSMORE ACADEMY

FATHER'S DAY

MINI GOLF, GAMES AND DOUGHNUTS

WEDNESDAY 11TH JUNE (AFTERNOON)

**IN CELEBRATION OF FATHER'S DAY, JOIN YOUR
CHILD FOR SOME OUTDOOR GAMES (GOLF, BALL
GAMES) DOUGHNUTS AND SQUASH**

£2.50 PER ADULT, TIMESLOTS WILL BE SENT BY TEXT



BOOK ON PARENT PAY BY 4TH JUNE





Ryton-on-Dunsmore Academy Stars

Year 1 Star Learner this week is

Oscar and Gerard

EYFS Star Learner this week is

Lillie



Year 2 Star Learner this week is

Lawrence

Year 3 Star Learner this week is

Freddie

Year 5 Star Learner this week is

Ella

Year 4 Star Learner this week is

Jaxson

Year 6 Star Learner this week is

All of Year 6



Value Awards



LOVE
HONESTY
HOPE
FAIRNESS
RESPECT
FORGIVENESS

Year 2's Bella was the recipient of our Values Award last week. Well done to Bella for showing our school values.

Here is the link to the May/July (half-term) digital version of Allsorts magazine https://bit.ly/ALLSORTS_MAYJULY - you can **tap** straight to advertisers' websites too when viewing the mag on your phone (please mention allsorts). There are lots of attraction to visit, services and articles to help your family. You can view this issue at www.allsortsmag.com too or on the allsorts Facebook page soon. Take care - Michelle Love (Editor).

RUGBY &
SURROUNDING VILLAGES

allsorts

0-12

May/July 25

for parents and children

IN THIS ISSUE

LOTS to do & visit

Birthday party ideas

Little chef cooking fun

Family health & well-being

over **10** pages of clubs & classes

Tiny travellers

PLUS School Notice Board



click on www.allsortsmag.com

PLAYGYM & PRESCHOOL CLASSES AT RUGBY GYMNASTICS CLUB

Weekday classes available for 18 months - 4 years

Contact: Gill@rugbygymnasticsclub.co.uk

01788 542617

Kilsby Lane, Rugby, Warwickshire. CV21 4PN

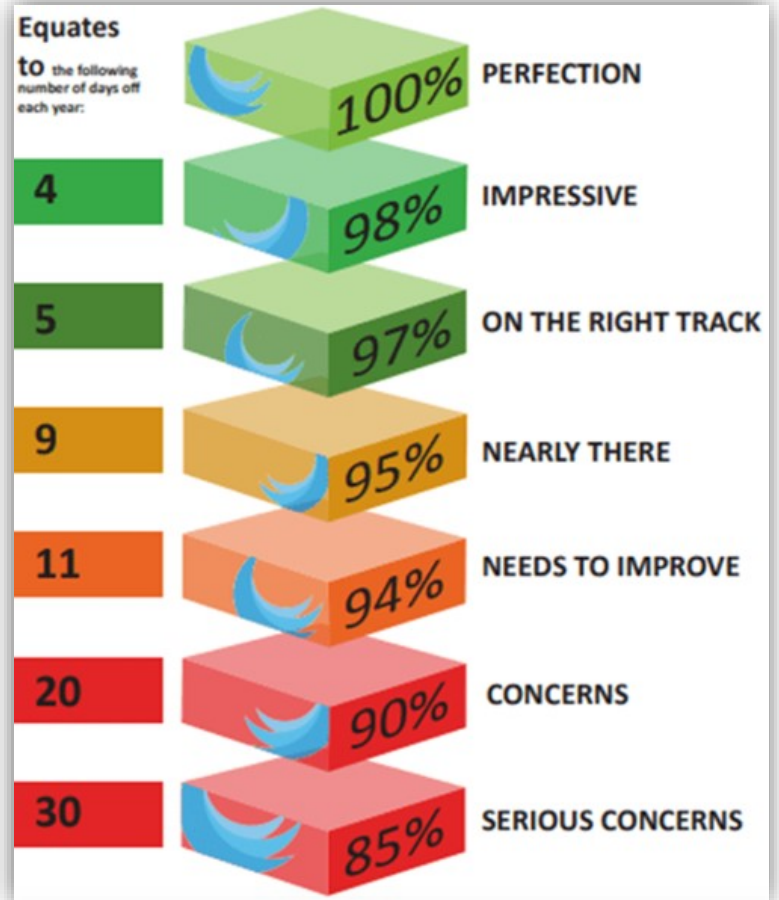
RGC



Attendance Update

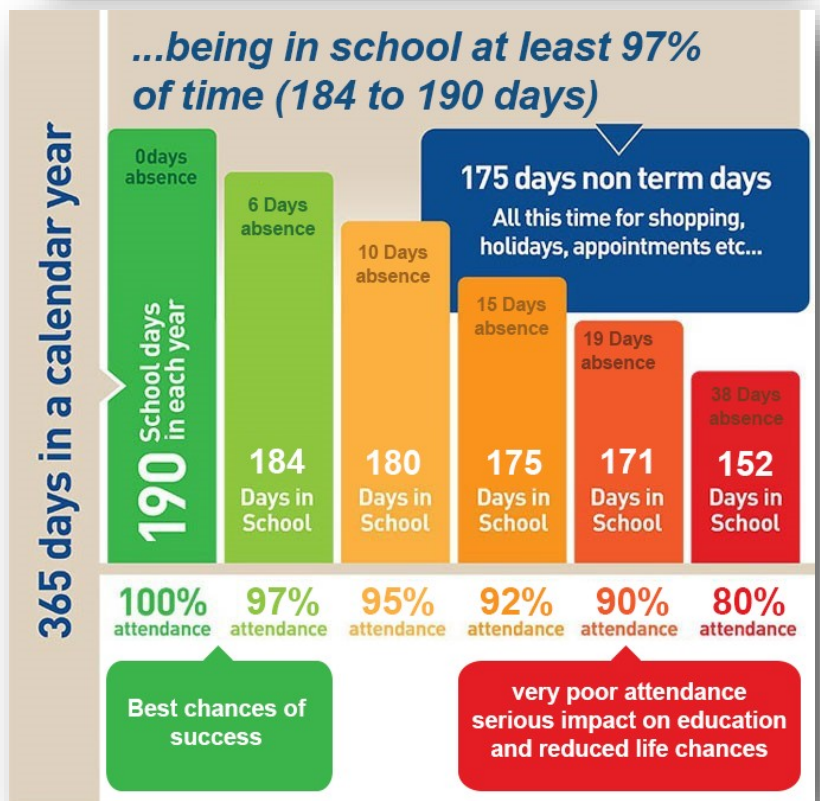
Please note that if your child is ill you must still contact us every day to let us know

Attendance	
Nursery	95%
Reception	90%
Year 1	99.1%
Year 2	96.2%
Year 3	93.3%
Year 4	93.3%
Year 5	92%
Year 6	97%



Well done to the 97 children who achieved a perfect 100% attendance last week. (10 more pupils than last week)

Every Day Counts



Be In SCHOOL
Be On TIME



Monday 2nd June	Teacher Training Day
Tuesday 3rd June	Back to School
Friday 6th June	Crowning of the May King and Queen
2nd-6th June	Year 4 Multiplication Check
3/4/5 and 6th June	Early Years Balance Bike Training
9th-13th June	KS1 Phonics Check
11th June 2.45pm	Wilde Class Come and Learn
	Father's Day Event (Afternoon, times will be sent on text)
19th June	Gypsy Roma Traveller Roadshow at Rugby Library
	We will be contributing work and attending this event, more details to follow.
Tuesday 24th June	Conkers Trip (Years 1 and 2)
Monday 30th June	New parent meeting 5pm, Early Years
Wednesday 2nd July	Moving On Day
Wednesday 9th July	Botanical Gardens Trip (Years 3, 4 and 5)
Thursday 10th July	Sports Day Picnic and Fair
Friday 11th July	End of year reports given out
Monday 14th July	Year 6 Trip to Air Hop
Friday 18th July	Break Up

Teacher Training Days 2025/6 These are the Teacher Training days for the next school year. We have one more left to set, which we hope to announce the date for soon.

1st September

Friday 2nd January

Monday 23rd February

Friday 22nd May

Monday 20th July

Miss Cullen's Recommended Reads



Do you love space? How about wizards? And the mysterious pyramids of ancient Egypt? Find them ALL in the pages of this laugh-out-loud 'pick your own' picture book adventure!

Bo's sister, Kai, has lost her special stick - and he needs YOUR help to find it before she starts to cry!

Is the stick lost in space? Has a wizard cast a spell on it? Or is it buried in an ancient Egyptian pyramid?

It's up to YOU to decide!

Pick a Story is the ONLY series where young readers choose between three completely different worlds - allowing them to change the story as it happens. Children are excited by having choice and a feeling of agency, and it fires their imaginations.

Featuring a joyfully diverse cast of characters, with themes of friendship, trust and cooperation as they learn and grow together, as well as an authentic representation of a non-binary lead character.

"Vivi- it's me, Dara. We're doing everything we can to find you..."

Vivi Conway has disappeared. With Vivi taken, and forgotten by everyone but her friends, Dara is struggling to hold it together.

They're trying everything they can, but nothing seems like enough. When Stevie, Chia and Merry reveal they have been working on a plan of their own, the friends must embark on a rescue mission that will take them far beyond the Unlands. The time will finally come to face the villainous Ar-awn, and when it does the group must be ready to use their combined powers.





**garden
organic** 1958



Reduce, Reuse, Recycle Family Fun Day

- 🌿 Rugby Eco Hub
- 🌿 Wednesday 28th May
- 🌿 Drop in between 10am-1pm



Join us for a morning of activities for all ages!
Find out more about how you can reuse items
you might throw away, what happens in a
compost bin and take home a newspaper pot!



CONTACT US

rugby@gardenorganic.org.uk

02476 303517

Working in Partnership

**garden
organic** 1958



Warwickshire Local Welfare Scheme

Help for residents at times of unavoidable crisis when they have no other means of support.

How can the Local Welfare Scheme help?

The discretionary scheme provides:

- Emergency support towards food, energy or other essentials as vouchers, food parcels from local/community food banks or with credit for energy.
- Help to people whose needs are more long-term, who are vulnerable through an ongoing set of circumstances, including:
 - care leavers
 - victims of domestic abuse
 - former armed forces personnel
 - those resettling in a community after a custodial term

This help may take the form of furnishing accommodation with basic furniture and appliances.

- Signposting to other agencies and organisations who can offer further support.



Who is eligible?

Applicants need to be:

- a legal resident in the UK
- aged 16 or over
- have no other access to funds or enough resources to pay for food or energy
- experiencing a situation which poses a serious health or safety risk to themselves and their family
- a resident of Warwickshire
- a member of the armed forces who can demonstrate a strong connection to Warwickshire

How to apply?

Call the Local Welfare Scheme on **0800 408 1448** or **01926 359182** for a confidential discussion with a friendly advisor.

In order to assess needs, advisors will require certain information. To make an application to the scheme, applicants will need to be prepared to share information, such as:

- National Insurance number
- Household details
- Financial circumstances
- Access to other forms of financial support
- Circumstances and reasons for the claim
- Preventative measures taken by the applicant or partner

Opening Hours

Monday to Thursday	9am to 5pm
Friday	9am to 4.30pm

www.warwickshire.gov.uk/localwelfarescheme
www.warwickshire.gov.uk/facinghardship

The council is committed to tackling and preventing fraud in all its forms. Where the council suspects that fraud may have occurred, it will investigate the matter.





#SALUTEOURFORCES

**Saturday 28 June
2025**



I'm supporting

ARMED FORCES DAY

FREE

Community Event

*Free activities & food for children - hot dogs, burgers and ice creams**

*Free Indian vegetarian food (Sikh Langar)**

*Paid food & drink vendors including coffee, pizza and a bar
Music from Ruby Ann Sings | Military reenactors & vehicles*

Military heritage village | Tri-Service competition

Find out more about a career in the military

Flypast from the Battle of Britain Memorial Flight - Avro Lancaster

**while stocks last*

**Saturday 28 June, 11am to 3pm
Pump Room Gardens,
Leamington Spa, CV32 4AA**



For further information visit: warwickdc.gov.uk/armedforcesday



THE ROYAL REGIMENT OF
FUSILIERS



www.warwickdc.gov.uk